



Yacht Carbon Offset

Establishing a Marina Carbon Offset Programme



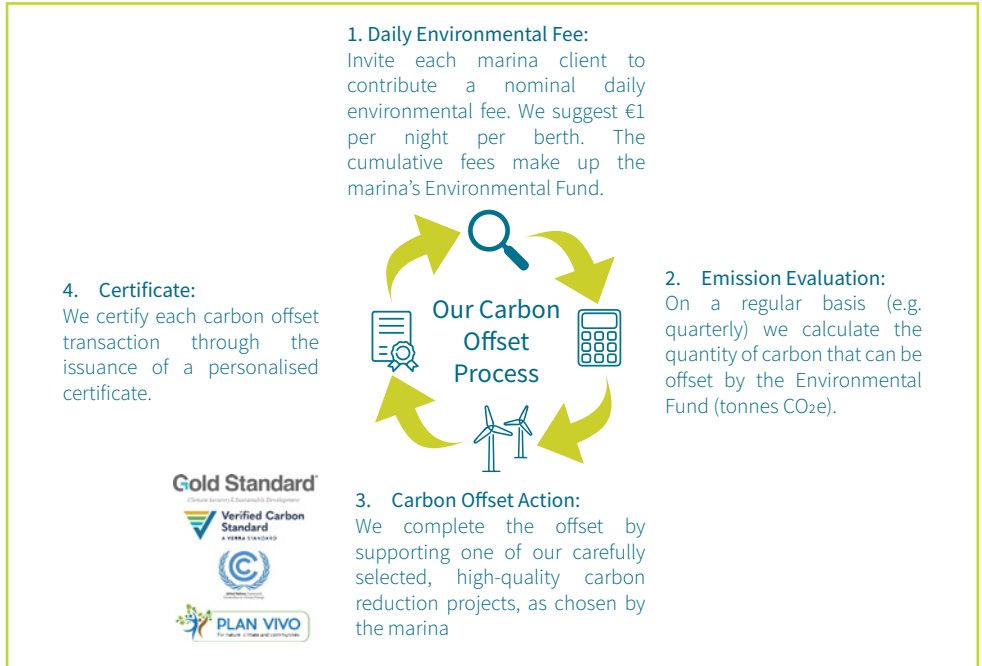
*“Helping the superyacht community to reduce
its net environmental impact since 2008”*



www.yachtcarbonoffset.com

Our Process

A superyacht's hotel load consumes a significant amount of energy. To counteract the impact whilst at berth, we propose that a marina establishes a Marina Carbon Offset Programme on behalf of its clients. The process is simple.



Your Certificate

Each certificate typically shows the Marina's name and location, the date and details of the emission activities and the project selected to complete the carbon offset transaction. We adapt the certificate information to reflect your needs and can keep disclosure to a minimum, if required.



Our process is certified to ISO9001 by Lloyds Register Quality Assurance.

Environmental Programme

The number of tonnes offset under the Environmental Programme is directly proportional to the size of the Environmental Fund, with no other hidden costs or charges. The following table indicates the size of an Environmental Fund and the associated offset for a 100-berth marina offsetting annually.

Client Participation	Annual Environmental Fund*	Tonnes Offset (tCO ₂ e)
100%	€ 36,500	2,920
50%	€ 18,250	1,460
10%	€ 3,650	280

*Assuming a €1 per berth per night contribution



These carbon offset quantities are significant and will result in a positive impact for both the marina and the environment.

To put it into perspective, a standard tanker lorry delivers 30,000 litres of fuel. The associated greenhouse gas emissions are 84 tonnes CO₂e.

The Benefits

There are clear benefits associated with establishing a carbon offset programme:

- **Immediate Environmental Action:** The action supports the development of clean energy power projects in the developing world. All projects are validated and monitored by a reputable International Registry.
- **Complimentary to Other Actions:** The marina's carbon offset programme compliments any other environmental projects and actions it has in place.
- **Positive Environmental Image:** The marketing value is considerable, sending a clear message to clients about the marina's environmental awareness.
- **Limited Cost to the Marina:** The programme is funded by the marina's clients on a voluntary basis. The marina may choose to match its clients' contributions to maximise the programme's impact.

“Action speaks louder than words”

The Carbon Reduction Projects

Your Environmental Programme supports carefully selected carbon reduction projects. We predominantly support renewable energy power and coastal marine ecosystem projects located in coastal or island locations, further increasing their impact to the superyacht community. All projects make important contributions to the global environment and bring co-benefits to the local communities. Here is a sample of the projects you can choose to support:



Wind Power - Jamaica (Registry: UNFCCC)

The largest wind power plant on the island of Jamaica, this project consists of 44 wind turbines with a combined generating capacity of 63MW.



Hydroelectric - Cote d'Ivoire (Registry: VCS)

Soubré is a large-scale (270MW), run-of-river hydroelectric power plant located in the Bas Sassandra region of the Côte d'Ivoire, utilizing hydro resources of the Sassandra River.



Methane Capture - Ecuador (Registry: VCS)

A small-scale power plant located in Cuenca, central-southern Ecuador. It comprises the capture of methane gas generated by decomposing domestic and commercial city waste at the landfill site.

All of our projects are validated to International Registries. For details of our current projects please visit our website: www.yachtcarbonoffset.com

Don't Delay - Act Today

We are here to help and take care of your Environmental Programme.

Contact Yacht Carbon Offset today at
sales@yachtcarbonoffset.com